

Electronic Supplementary Material

Role of Intracellular Distribution of Feline and Bovine SAMHD1 Proteins in Lentiviral Restriction

Chu Wang^{1,2} • Lina Meng¹ • Jialin Wang¹ • Kaikai Zhang¹ • Sizhu Duan¹ • Pengyu Ren¹ • Yingzhe Wei¹ • Xinyu Fu¹ • Bin Yu^{1,3} • Jiaxin Wu^{1,3}✉ • Xianghui Yu^{1,3}✉

1. National Engineering Laboratory for AIDS Vaccine, School of Life Sciences, Jilin University, Changchun 130012, China;

2. The First Hospital and Institute of Immunology, Jilin University, Changchun 130012, China;

3. Key Laboratory for Molecular Enzymology and Engineering, the Ministry of Education, School of Life Sciences, Jilin University, Changchun 130012, China.

Supporting information to DOI: 10.1007/s12250-021-00351-5

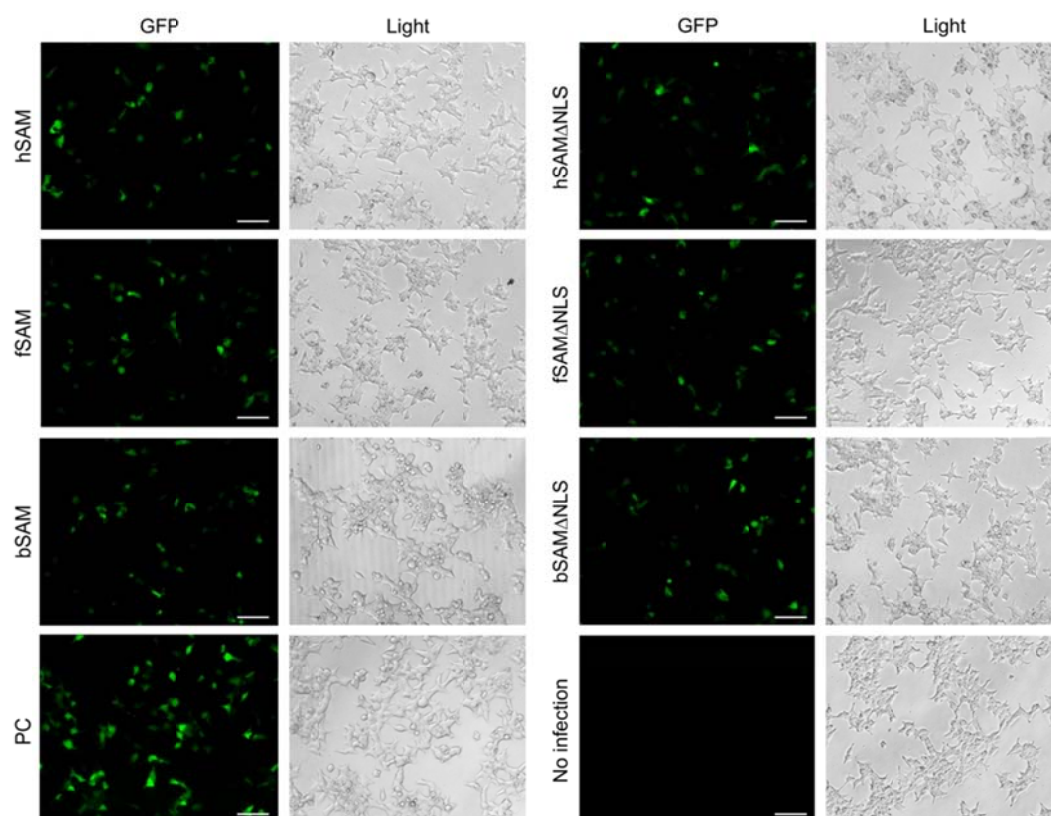


Fig S1. The GFP expression in FIV-GFP-infected HEK293T cells expressing WT or NLS-deleted SAMHD1 proteins. SAMHD1-transfected HEK293T cells (2×10^5) were infected with FIV-GFP (MOI = 0.5). 48 h post infection, the expression of GFP was observed under fluorescence microscope. The light fields of infected cells were also shown. Infection of empty vector-transfected cells was set as the positive control (PC). White scale bars, 50 μ m. One representative result of three independent infections is shown.

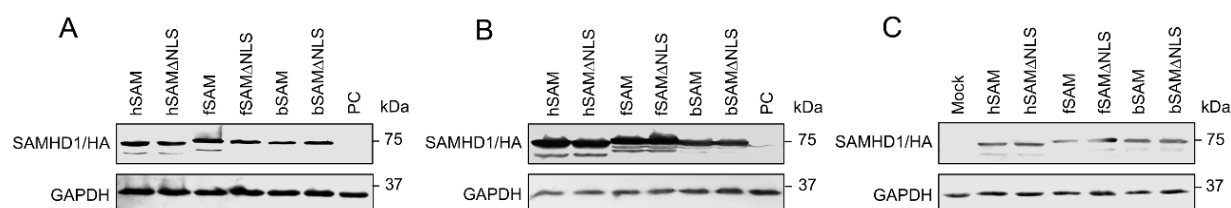


Fig S2. The expression of WT and NLS-deleted SAMHD1 proteins in different cells before infection. **A-C** The intracellular levels of indicated SAMHD1 proteins in the transfected **(A)** T2M-bl cells and **(B)** HEK293T cells and **(C)** the stable U937 cells were analyzed by Western blotting using anti-HA and anti-GAPDH antibodies.

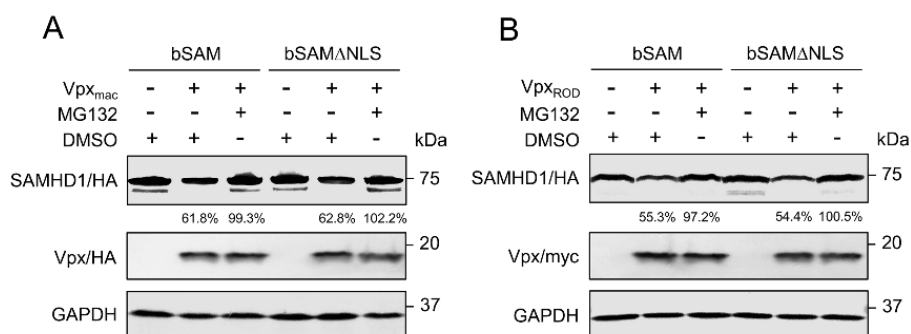


Fig S3. Both WT and NLS-deleted bovine SAMHD1 were degraded by Vpx in a proteasome-dependent manner. **A, B** HEK293 cells (1×10^6) were co-transfected with 600 ng of WT or NLS-deleted bovine SAMHD1-HA expression plasmids and 500 ng of **(A)** pCG-Vpx_{mac}-HA or **(B)** pCG-Vpx_{ROD}-myc or empty vector. The transfected cells were treated with MG132 at 20 μ mol/L or DMSO as a negative control at 36 h after transfection. Cells were harvested 12 h later (48 h post-transfection) and then analyzed by Western blotting using anti-HA, anti-myc and anti-GAPDH antibodies. The percentage of SAMHD1 in the presence of Vpx_{mac} or Vpx_{ROD} was calculated relative to that of the corresponding SAMHD1 in the absence of Vpx_{mac} or Vpx_{ROD} (set to 100%, respectively).